

HUBBELL®
Premise Wiring

Fiber
Connectivity
Product Guide



FIBER Solutions

Hubbell's end-to-end fiber solutions support a wide range of cabling applications, from small building backbone to large data center infrastructure. Fiber cabling networks begin with a reliable connectivity solution, from basic field termination to high density, pre-terminated systems.

For a complete interconnect system, Hubbell's advanced FCR Series fiber enclosures are designed for maximum flexibility and user-friendly access. A full complement of interconnect panels, MPO cassettes and high density solutions provide a scalable infrastructure to support the connected enterprise.

Hubbell BIDnet pre-terminated MPO cable assemblies are custom made to order with fast delivery for any 10G or 40G/100G-ready system installation. Quality, performance and reliable delivery define Hubbell's reputation for supplying pre-terminated cabling infrastructure.



OptiChannel MPO Cassettes: OC Series

Hubbell's OptiChannel OC Series MPO cassettes are modular pre-terminated interconnect transitions, with a connector panel in front and a rear 12-fiber MPO male output receptacle. LC 24-port cassettes have two 12-fiber MPO receptacles. Used in conjunction with pre-terminated fiber trunk assemblies, this solution eliminates field termination for a rapid fiber channel deployment in the data center. OC series cassettes snap into any FCR series enclosure for a total system solution.



LC Quad, 24-Port, OM3
OCLCQ50G



SC Duplex, 12-Port, OM3
OCSC50G



LC Duplex, 12-Port, OS2
OCLCSM



LC Quad, 24-Port, OM3
OCLCQ50GC

HUBBELL OPTICHANNEL MPO CASSETTES

Type A Polarity

Fiber Type	Color	SC Duplex	ST-Style	LC Duplex 12F	LC Duplex 24F*	LC Quad 24F*
50µm, OM2	Black	OCSC50	OCST50	OCLC50	OCLCD50	OCLCQ50
50µm, OM3	Aqua	OCSC50G	-	OCLC50G	OCLCD50G	OCLCQ50G
50µm, OM4	Aqua	OCSC50G4	-	OCLC50G4	OCLCD50G4	OCLCQ50G4
50µm, OM4	Violet	-	-	OCLC50G4VI	OCLCD50G4VI	OCLCQ50G4VI
62.5µm, OM1	Beige	OCSC62	OCST62	OCLC62	OCLCD62	OCLCQ62
SM, OS2	Blue	OCSCSM	OCSTSM	OCLCSM	OCLCDSM	OCLCQSM

Note: Type A polarity is straight 1 to 1 fiber mapping (no pair crossing).

HUBBELL OPTICHANNEL MPO CASSETTES

Type C Polarity

Fiber Type	Color	SC Duplex	ST-Style	LC Duplex 12F	LC Duplex 24F*	LC Quad 24F*
50µm, OM3	Aqua	-	-	OCLC50GC	OCLCD50GC	OCLCQ50GC
50µm, OM4	Aqua	-	-	OCLC50G4C	OCLCD50G4C	OCLCQ50G4C
50µm, OM4	Violet	-	-	OCLC50G4CVI	OCLCD50G4CVI	OCLCQ50G4CVI

Note: Type C polarity is crossed-pair fiber mapping (1 to 2; 2 to 1).

Standards

- TIA-568.3, TIA-604-FOCIS
- Telcordia GR-326-CORE, Telcordia GR-409
- ANSI/ICEA S-83-596
- IEEE 802.3: 10G, 40G, 100G applications

MPO Connector Specifications

- Gender: female has no alignment pins; male has pins
- MM insertion loss: <0.50dB typical
- SM insertion loss: <0.55dB (0.35dB typical)
- MM return loss: >26dB
- SM return loss: >50dB
- Polarity: TIA-568-C.3, Type A, B or C

Single Fiber Connector Specifications

- MM insertion loss: <0.50dB (0.35dB typical)
- SM insertion loss: <0.35dB (0.15dB typical)
- MM return loss: >26dB
- SM return loss: >50dB (UPC), >65dB (APC)
- Ferrule material: zirconia ceramic
- Mating durability: 500 cycles



LC Mesh Bundle Trunk, OM3, 48-Strand



LC Fan-Out Trunk, OM3, 48-Strand

Fiber Trunk Assemblies **BIDnet**

Hubbell's reputation for delivering high reliability cable assemblies into large scale data centers extends to financial, government, medical and educational institutions. Custom engineered to order in any user-specified configuration, Hubbell pre-terminated fiber trunk assemblies are delivered 100% factory tested using premium quality cable and components. Local manufacturing provides fast, reliable delivery, and mission critical performance to our valued data center clients.

40Gb/s and 100Gb/s MPO Fiber Cord Options

- Connectors: MPO male or female, 12-fiber (40G) or 24-fiber (100G)
- Fiber types: OM3, OM4
- 40Gb/s fiber strand count: 12, 24, 48, 72 and 96 fibers
- 100Gb/s fiber strand count: 24, 48, 72 and 96 fibers
- Cable: plenum or riser
- Polarity: 40GBASE-SR4 or 100GBASESR10

MPO Fiber Cord Options

- Connectors: MPO male or female
- Fiber types: OM1, OM2, OM3, OM4, OS2
- Fiber strand count: 12, 24, 48, 72, 96 and 144 fibers
- Cable: plenum or riser, armored or non-armored
- Polarity: TIA-568.3 Type A, B or C



MPO 48-Strand, OM3
FPCPMT48M3L20FN

Mesh Bundle Trunk Options (2.0mm duplex zip cord)

- Connectors: LC/APC, MSFP, SC, SC/APC, ST, FC, FC/APC
- Fiber types: OM1, OM2, OM3, OM4, OS2
- Fiber strand count: 6, 12, 24, 48, 72 and 96 fibers
- Cable: plenum or riser
- Outer sheath: polyester mesh

Transition Assembly Options

- Connectors: MTP female to LC or SC duplex
- Fiber types: 50/OM3, 50/OM4, SM/OS2
- Fiber strand count: 12, 24 and 48 fibers
- Cable: plenum, riser or LSZH (armored or non-armored)
- Polarity: TIA-568.3, Type A, B or C



MPO 12-Strand, OS2
FPCPMTPS3FN

Distribution Fan-Out Trunk Options

- Connectors: LC/APC, MSFP, SC, SC/APC, ST, FC, FC/APC
- Fiber types: OM1, OM2, OM3, OM4, OS2
- Fiber strand count: 6, 12, 24, 48, 72 and 96 fibers
- Cable: plenum or riser, armored or non-armored
- Fan-out: 2.0mm duplex furcation tubing (simplex for OS2)

Channel Application Distance Limits

- OM3 40G/100G limit: 100m (328ft)
- OM4 40G/100G limit: 150m (492ft)
- OM3/10G limit: 300m (984ft)
- OM4/10G limit: 550m (1,804ft)

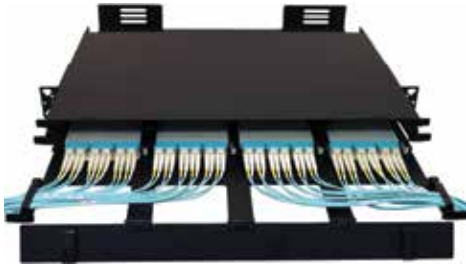


MPO-LC Hydra, OM3
FHPMTLC3M20F

All BIDnet fiber trunk assemblies are custom made-to-order items. Please call our inside sales team for price and lead time. Refer to product data sheets for nomenclature and detailed design information. Channel application distance limits apply.

HUBBELL OptiChannel Duplex Fiber Patch Cords

Fiber patch cords provide connections from the work area to the wall outlet, or from active equipment to the patch panel. These applications include connecting to network interface cards (NIC), or to a fiber hub, router or switch. Cords are available OM1, OM2, OM3, OM4 and OS2 fibers. All patch cords are factory polished and 100% tested for superior performance. OM3, OM4 and OS2 fiber cords with bend-insensitive fiber support 10GbE applications.



Standards

- TIA-568.3
- TIA-604-FOCIS
- Telcordia GR-326-CORE

HUBBELL OPTICHANNEL FIBER PATCH CORDS SC and ST Duplex

SC to SC

Description	Color	Riser Catalog Number	Plenum Catalog Number
SC to SC, 62.5, OM1	Orange	DFRCSCSCCyyMM	DFPCSCSCCyyMM
SC to SC, 50, OM2	Orange	DFRCSCSCDyyMM	DFPCSCSCDyyMM
SC to SC, 50, OM3	Aqua	DFRCSCSCEyyMM	DFPCSCSCEyyMM
SC to SC, SM, OS2	Yellow	DFRCSCSCSyySM	DFPCSCSCSyySM
SCA to SCA, OS2, APC	Yellow	DFRCSCASCASyySM	DFPCSCASCASyySM

ST to ST

ST to ST, 62.5, OM1	Orange	DFRCSTSTCyyMM	DFPCSTSTCyyMM
ST to ST, 50, OM2	Orange	DFRCSTSTDyyMM	DFPCSTSTDyyMM
ST to ST, 50, OM3	Aqua	DFRCSTSTEyyMM	DFPCSTSTEyyMM
ST to ST, SM, OS2	Yellow	DFRCSTSTSyyMM	DFPCSTSTSyyMM

ST to SC

ST to SC, 62.5, OM1	Orange	DFRCSTSCCyyMM	DFPCSTSCCyyMM
ST to SC, 50, OM2	Orange	DFRCSTSCDyyMM	DFPCSTSCDyyMM
ST to SC, 50, OM3	Aqua	DFRCSTSCEyyMM	DFPCSTSCEyyMM
ST to SC, SM, OS2	Yellow	DFRCSTSCSyySM	DFPCSTSCSyySM

MSFP to LC

MSFP to LC, 50, OM3	Aqua	-	MSFPLC50G3Myy
MSFP to LC, 50, OM4	Aqua	-	MSFPLC50G4Myy

Replace **yy** with standard lengths of **1, 2, 3, 5** or **10** meters. Longer plenum lengths available up to 25 meters.
Note: MSFP is LC duplex with 5.25mm pitch for Brocade® equipment. Standard LC duplex pitch is 6.25mm.



SC Duplex to SC Duplex,
OS2
DFRCSCSCS1SM



ST to ST Duplex,
OM1
DFRCSTSTC1MM



SC Duplex to ST-style Duplex,
OS2
DFRCSTSCS1SM



MSFP to LC
MSFPLC50G3M1

Brocade is a registered trademark of Brocade Communications Systems, Inc.

HUBBELL OPTICHANNEL FIBER PATCH CORDS
LC Duplex

Multimode

Description	Cable Color	Riser Catalog Number	Plenum Catalog Number
LC to LC, 50, OM4	Aqua	DFRCLCLCFyyMM	DFPCLCLCFyyMM
LC to SC, 50, OM4	Aqua	DFRCLCSCFyyMM	DFPCLCSCFyyMM
LC to LC, 50, OM3	Aqua	DFRCLCLCEyyMM	DFPCLCLCEyyMM
LC to SC, 50, OM3	Aqua	DFRCLCSCEyyMM	DFPCLCSCEyyMM
LC to LC, 50, OM2	Orange	DFRCLCLCDyyMM	DFPCLCLCDyyMM
LC to SC, 50, OM2	Orange	DFRCLCSCDyyMM	DFPCLCSCDyyMM
LC to LC, 62.5, OM1	Orange	DFRCLCLCCyyMM	DFPCLCLCCyyMM
LC to SC, 62.5, OM1	Orange	DFRCLCSCCyyMM	DFPCLCSCCyyMM
LC to ST, 62.5, OM1	Orange	DFRCLCSTCyyMM	DFPCLCSTCyyMM

Singlemode

LC to LC, singlemode, OS2	Yellow	DFRCLCLCSyySM	DFPCLCLCSyySM
LC/APC to LC/APC, singlemode, OS2	Yellow	DFRCLCALCASyySM	DFPCLCALCASyySM
LC/APC to SC/APC, singlemode, OS2	Yellow	DFRCLCASCASyySM	DFPCLCASCASyySM
LC to ST, singlemode, OS2	Yellow	DFRCLCSTSyySM	DFPCLCSTSyySM
LC to SC, singlemode, OS2	Yellow	DFRCLCSCSyySM	DFPCLCSCSyySM

Replace **yy** with standard stock lengths of **1, 2, 3, 4** or **5** meters.

Longer lengths 6 to 25 meters available in Plenum. Longer lengths 5 to 10 meters available in Riser. Custom lengths quoted to order.



LC to LC Duplex, OM3
DFPCLCLCE1MM



LC to LC Duplex, OS2
DFPCLCLCS1SM

Patch Cord Installation Guidelines

- Add proper cable slack when specifying patch cord lengths.
- For long term reliability, comply with minimum cable bend radius limits.
- Patch cords entering the enclosures should have adequate slack to allow opening of the drawers.
- Use the appropriate cable management for bundled patch cords.

High Density LC Uniboot Patch Cords

Description	Cable Color	Plenum Catalog Number
LC to LC, 50, OM3	Aqua	HDPCLC50G3Myy
LC to SC, 50, OM3	Aqua	HDPCLCSC50G3Myy
LC to LC, 50, OM4	Aqua	HDPCLC50G4Myy
LC to SC, 50, OM4	Aqua	HDPCLCSC50G4Myy
LC to LC, SM OS2	Yellow	HDPCLCSMyy
LC to LC, SM OS2	Yellow	HDPCLCSCSMyy

Replace **yy** with standard stock lengths of **1, 2, 3, 5** or **10** meters.



HD LC Uniboot, OM3
HDPCLC50G3M1

Pigtails

Hubbell fiber optic pigtails are manufactured with high quality connectors, factory polished for low insertion loss and low back reflection. Pigtails are available in LC, SC, FC and ST style versions with both singlemode and multimode 900µm buffered fiber types. Buffered fibers are color-coded by application. All pigtails are 100% factory tested for insertion loss.



LC Singlemode, OS2
FPLCS3SM



SC Singlemode, OS2
FPSCS3SM



ST Multimode, OM1
FPSTC3MM



FC Singlemode, OS2
FPFCS3SM

SINGLE FIBER PIGTAILS 900 micron buffer, 3 meter length

LC

OM1	OM2	OM3	OM4	OS2	OS2/APC
Orange	Orange	Aqua	Aqua	Yellow	Yellow
FPLCC3MM	FPLCD3MM	FPLCE3MM	FPLCF3MM	FPLCS3SM	FPLCAS3SM

SC

OM1	OM2	OM3	OM4	OS2	OS2/APC
Orange	Orange	Aqua	Aqua	Yellow	Yellow
FPSCC3MM	FPSCD3MM	FPSC E3MM	FPSCF3MM	FPSCS3SM	FPSCAS3SM

ST

OM1	OM2	OM3	OM4	OS2	OS2/APC
Orange	Orange	Aqua	Aqua	Yellow	Yellow
FPSTC3MM	FPSTD3MM	FPSTE3MM	FPSTF3MM	FPSTS3SM	-

FC

OM1	OM2	OM3	OM4	OS2	OS2/APC
Orange	Orange	Aqua	Aqua	Yellow	Yellow
FPFCC3MM	FPFCD3MM	FPFCE3MM	FPFCF3MM	FPFCS3SM	FPFCAS3SM

Note: OM3, OM4 and OS2 fibers are bend-insensitive.
OS2/APC pigtails have a Green boot and Green SC or LC connector.

6- AND 12-FIBER PIGTAIL BUNDLES 900 micron buffer, 3 meter length

Catalog Number example: **FPBKR12LC3M** (12-strand, LC, OM3)



Pigtail Bundle, LC
12-Strand, OS2
FPBKR12LC6S

Root Catalog Number	Strand	Connector Type	Fiber Type
FPBKR	6 for 6-strand	LC	1M for 62.5 micron (OM1) multimode
Fiber Pigtail Bundle Kit (Riser)	12 for 12-strand	LCA	2M for 50 micron (OM2) multimode
		SC	3M for 50 micron (OM3) multimode
		SCA	4M for 50 micron (OM4) multimode
		ST	6S for singlemode (OS2)
		FC	
		FCA	

Buffer Color Code Sequence: Blue, Orange, Green, Brown, Slate, White, Red, Black, Yellow, Violet, Rose, Aqua

LC ADAPTERS

Mount Type	Type	Zirconia Ceramic Sleeve
Snap Mount	LC Duplex	FALCDSC6xx
Screw Mount	LC Duplex	FALCDSS6xx
Snap Mount	LC Quad	FALCQSC6xx
Screw Mount	LC Quad	FALCQSS6xx

xx = Color: **AQ** (Aqua), **BE** (Beige), **BK** (Black), **B** (Blue), **GN** (Green), **OR** (Orange), **R** (Red) or **Y** (Yellow)



LC Duplex, Screw Mount
FALCDMS6AQ



LC Duplex, Snap Mount
FALCDMC6B



SC Duplex, Screw Mount
FASCDMS6B



SC Duplex, Snap Mount
FASCDMC6GN



MPO, Screw Mount
FAMTPSBK

SC ADAPTERS

Mount Type	Type	Zirconia Ceramic Sleeve
Snap Mount	SC Duplex	FASCDSC6xx
Screw Mount	SC Duplex	FASCDSS6xx
Snap Mount	SC Simplex	FASCSSC12xx
Screw Mount	SC Simplex	FASCSS12xx

xx = Color: **AQ** (Aqua), **BE** (Beige), **BK** (Black), **B** (Blue), **GN** (Green), **OR** (Orange), **R** (Red) or **Y** (Yellow)

MPO ADAPTERS

Standard Polarity

Mount Type	Aqua	Beige	Black	Green	Violet
Snap Mount	FAMTPAQ	FAMTPBE	FAMTPBK	FAMTPGN	FAMTPVI
Screw Mount	FAMTPSAQ	FAMTPSBE	FAMTPSBK	FAMTPSGN	FAMTPSVI

Reversed Polarity

	Gray
Snap Mount	FAMTPRPGY
Screw Mount	FAMTPSRPGY

LC and SC Adapters OptiChannel

Hubbell LC and SC adapters are made with high quality zirconia ceramic alignment sleeves in a precision, standards-compliant duplex housing with stainless steel retaining clip. Compatible with FSP panel blanks for a custom color coded solution. Zirconia is required for singlemode, and recommended for multimode for best performance. Phosphor bronze is suitable for multimode only.

FSP ADAPTER PANELS

Unloaded

Style	Ports	Catalog Number
SC Simplex, MPO or LC Duplex	6	FSPSC6X
SC Simplex, MPO or LC Duplex	8	FSPSC8X
SC Simplex, MPO or LC Duplex	12	FSPSC12X
SC Duplex or LC Quad	3	FSPSCD3X
SC Duplex or LC Quad	4	FSPSCD4X
SC Duplex or LC Quad	6	FSPSCD6X
ST-Style	6	FSPST6X
ST-Style	8	FSPST8X
MTP-Style	6	FSPSC6X
Blank	-	FSPB
JACK-PACK®	4	FSPHD4X
JACK-PACK	6	FSPHD6X

JACK-PACK panels have standard keystone openings.



SC Duplex, 12-Port
FSPSCD6X



SC Duplex, 6-Port
FSPSCD3X



SC Simplex, 8-Port
FSPSC8X



SC Simplex, 6-Port
FSPSC6X

OptiChannel FSP Adapter Panels

Hubbell FSP Series adapter panels are a standards compliant, snap-in design with high quality precision adapters. A wide range of adapter colors are available for custom color coding of secure networks. Zirconia is required for singlemode, and recommended for multimode, for best performance. Phosphor bronze is suitable for multimode only.



LC Duplex, 6-Port
FSPLCDM3AQ



LC Duplex, 24-Port
FSPLCDM12AQ



LC Quad, 24-Port
FSPLCQS6Y



SC Duplex, 6-Port
FSPSCDM3B



SC Duplex, 12-Port
FSPSCDS6Y



ST/SC Duplex, 6-Port
FSPSCST3



ST/SC Duplex, 12-Port
FSPSCST6



SC/APC Simplex, 6-Port
FSPSCA6



SC Simplex, 6-Port
FSPSC6



MPO, 6-Port
FSPMTPAQ6

LC DUPLEX, LC QUAD AND SC DUPLEX

LC Duplex

Ports	Phosphor Bronze, Multimode	Zirconia Ceramic, Single/Multimode
6	FSPLCDM3xx	FSPLCDS3xx
12	FSPLCDM6xx	FSPLCDS6xx
24	FSPLCDM12xx	FSPLCDS12xx

LC Quad

12	FSPLCQM3xx	FSPLCQS3xx
24	FSPLCQM12xx	FSPLCQS12xx

SC Duplex

6	FSPSCDM3xx	FSPSCDS3xx
12	FSPSCDM12xx	FSPSCDS12xx

xx = Color: **AQ** (Aqua), **BE** (Beige), **BK** (Black), **B** (Blue), **GN** (Green), **OR** (Orange), **R** (Red) or **Y** (Yellow)

SC TO ST DUPLEX AND ST DUPLEX

Ports	Type	Color	Phosphor Bronze	Zirconia Ceramic
6	SC to ST Duplex	Blue	FSPSCST3	FSPSCSTDS3
12	SC to ST Duplex	Blue	FSPSCST6	FSPSCSTDS6
6	ST Duplex	Blue	FSPSTD3	FSPSTDS3
12	ST Duplex	Blue	FSPSTD6	FSPSTDS6

SC AND SC/APC SIMPLEX

Ports	Type	Color	Phosphor Bronze Sleeve	Zirconia Ceramic Sleeve
6	SC Simplex	Blue	FSPSC6	FSPSCSS6
8	SC Simplex	Blue	FSPSC8	FSPSCSS8
12	SC Simplex	Blue	FSPSC12	FSPSCSS12
6	SC/APC Simplex	Green	–	FSPSCA6
12	SC/APC Simplex	Green	–	FSPSCA12

MPO SIMPLEX

Ports	Type	Color	Polarity	Catalog No.
6	MPO	Aqua	Standard	FSPMTPAQ6
6	MPO	Green	Standard	FSPMTPGN6
6	MPO	Gray	Reversed	FSPMTPRPGY6

PRE-POLISHED CONNECTORS

900/250 μm

LC PROclick®

Type	Color	12-Pack	100-Pack
50μm, OM3/OM4	Aqua	FCLC900K50GM12	FCLC900K50GM100
62.5μm, OM1	Beige	FCLC900K62M12	FCLC900K62M100
50μm, OM2	Black	FCLC900K50M12	FCLC900K50M100
SM, OS2	Blue	FCLC900KSM12	FCLC900KSM100

SC PROclick®

50μm, OM3/OM4	Aqua	FCSC900K50GM12	FCSC900K50GM100
62.5μm, OM1	Beige	FCSC900K62M12	FCSC900K62M100
50μm, OM2	Black	FCSC900K50M12	FCSC900K50M100
UPC SM, OS2	Blue	FCSC900KSM12	FCSC900KSM100
APC SM, OS2	Green	FCSC900KASM12	FCSC900KASM100

ST 2CLICK®

Type	Color	12-Pack	100-Pack
50μm, OM3/OM4	Aqua	FCST50GM12	OFCLV5
62.5μm, OM1	Beige	FCST62M12	
50μm, OM2	Black	FCST50M12	
SM, OS2	Blue	FCSTSM12	

Note: Precision cleave tool **OFCLV5** recommended.



LC Pre-Polished
FCLC900K50GM12



SC Pre-Polished
FCSC900K62M12



2CLICK® ST
FCSTSM12



Cleave Tool
OFCLV5

Four Easy Termination Steps

High quality PROclick® no-polish field termination connectors reduce installation labor.



Strip



Wipe



Cleave



Insert and Click

HUBBELL OPTICHANNEL FUSION SPLICE CONNECTORS

Multimode

Type	LC	SC	ST-Style
62.5 OM1	FCLCF900M626PK	FSCSCF900M626PK	FCSTF900M626PK
50 OM2	FCLCF900M506PK	FSCSCF900M506PK	FCSTF900M506PK
50 OM3	FCLCF900M50G6PK	FSCSCF900M50G6PK	FCSTF900M50G6PK

Singlemode

UPC OS2	FCLCF900SM6PK	FSCSCF900SM6PK	FCSTF900SM6PK
---------	----------------------	-----------------------	----------------------

Note: Pack of 6 connectors, each in a protective capsule with cleave protector, extended dust cap, 900μm boot and splice sleeve. Compatible with fusion splicers having a removable fiber holder. Metal holder fixture required (sold separately). Hubbell fusion splice heat shrink oven, below, is also required for termination.



LC Fusion Splice-On
FCLCF900M50G6PK



SC Fusion Splice-On
FCSCF900M626PK



Fusion Splice Heat Shrink Oven
FCSPHISOVEN

FUSION SPLICE HEAT SHRINK OVEN

Catalog No.

FCSPHISOVEN

OptiChannel High Density Enclosures

Hubbell OptiChannel High Density FCR Series Fiber Enclosures have a 144-port/1U configuration. Designed specifically for data centers, the FCRHD1U Series enclosure is an innovative solution to maximize density without compromising accessibility. A 3-drawer design provides a flexible, scalable and reconfigurable interconnect facility. Each drawer accepts four compact OCLCHD Series cassette modules. Each cassette has a 12-fiber rear MPO receptacle to minimize cable congestion. A true plug-n-play design, the FCRHD1U Series has the flexibility to re-configure, partition or scale to future 40/100 GbE fiber applications.



HD Enclosure
FCRHD1UBK

HIGH DENSITY 144 PORT 1U ENCLOSURES

Max LC Port Capacity: 144

Height	Width	Depth	Color	Catalog No.
1.75" (44)	17" (432)	17" (432)	Black	FCRHD1UBK
			Gray	FCRHD1UGY



OM3 Cassette
OCLCHD50G3

ULTRA COMPACT LC TO MPO CASSETTES

Port Count: 12

Height	Color	OM3	OM4	OS2
0.5" (13)	Aqua	OCLCHD50G3	OCLCHD50G4	OCLCHDSM
	Violet	-	OCLCHD50G4VI	-

OptiChannel Premium Enclosures

Hubbell's next generation FCR enclosures feature enhancements to capacity, cable management and administration. The new 17-inch depth maximizes space for interconnections, splice trays and cable storage. The L-shaped slide-out cover permits full internal access, while improving dust shielding and tamper resistance. A user friendly clip-on labeling system facilitates administration and accepts user-generated labels. All new cable management features and hardware maintain cable bend radius for standards-compliant installation.

- 17-inch depth relieves cable congestion
- Fully removable one-piece slide out cover
- Slide out inner drawer allows for maximum access
- Accepts Hubbell FSP panels and OC Series cassettes
- Available in vertical panel mounting configuration



FCR4U15SP



FCR3U12SP



FCR1U3SP

FCR ENHANCED RACK MOUNT ENCLOSURES

Rack Units	Depth	FSP Panel Capacity	Splice Tray Capacity	Max LC Port Capacity	Standard	Locking
1	17" (432)	3	2	72	FCR1U3SP	FCR1U3SPL
2	17" (432)	6	6	144	FCR2U6SP	FCR2U6SPL
2	17" (432)	9	6	216	FCR2U9SP	FCR2U9SPL
3	17" (432)	12	12	288	FCR3U12SP	FCR3U12SPL
4	17" (432)	15	16	360	FCR4U15SP	FCR4U15SPL

Note: Locking versions assembled to order.
FCR2U9SP does not accept OC Series cassettes.

FCR ENHANCED RACK MOUNT ENCLOSURES, VERTICAL PANEL MOUNT

Rack Units	Depth	FSP Panel Capacity	Splice Tray Capacity	Max LC Port Capacity	Standard	Locking
4	17" (432)	12	16	288	FCR4U12SPV	FCR4U12SPVL

Enclosures OptiChannel

Hubbell's economy FPR and FEUR fiber enclosures support a wide range of interconnect applications, from data centers to building backbone, horizontal and entrance facilities. Designed to accept fusion splices, field terminations, or pre-terminated assemblies.

FPR RACK MOUNT ENCLOSURES Pre-Punched

ST Simplex and SC Duplex

Type	Rack Units	Depth In (mm)	12-Port	24-Port
ST-Style	1	11" (279)	FPR012STM	FPR024STM
SC Duplex	1	11" (279)	FPR012SM	FPR024SCM
Unloaded	1	11" (279)	FPR012SCX	FPR024SCX

FSP Panel Style, Unloaded

Rack Units	Depth In (mm)	Panel Capacity	Max LC Port Capacity	Catalog No.
1	11" (279)	3	72	FPR3SP

Note: Accepts all FSP Series panels



ST, 12-Port, Loaded
FPR012STM



ST, 24-Port, Unloaded
FPR024SCX



FSP Panel (Shown Loaded)
FPR3SP

FIBER INTERCONNECTION SHELVES Loaded, 1 Rack Unit

LC Duplex

Mode	Adapter Color	12-Port	24-Port	48-Port
Multimode	Beige	FEUR12LCDM	FEUR24LCDM	FEUR48LCDM
Multimode	Aqua	FEUR12LCMOM3	FEUR24LCMOM3	FEUR48LCMOM3
Single Mode	Blue	FEUR12LCDSM	FEUR24LCDSM	FEUR48LCDSM

ST-Style

Multimode	Nickel	FEUR12STM	FEUR24STM	-
-----------	--------	------------------	------------------	---

SC Duplex

Multimode	Beige	FEUR12SCM	FEUR24SCM	FEUR48SCM
Multimode	Aqua	FEUR12SCOM3	FEUR24SCOM3	FEUR48SCOM3
Single Mode	Blue	FEUR12SCSM	FEUR24SCSM	FEUR48SCSM



LC Duplex MM, Loaded
FEUR24LCDOM3



ST MM, Loaded
FEUR24STM



SC Duplex MM, Loaded
FEUR24SCM

FSP ADAPTER PANEL, UNLOADED

72 maximum LC port capacity

FEURFSPD

Note: Accepts all FSP Series panels



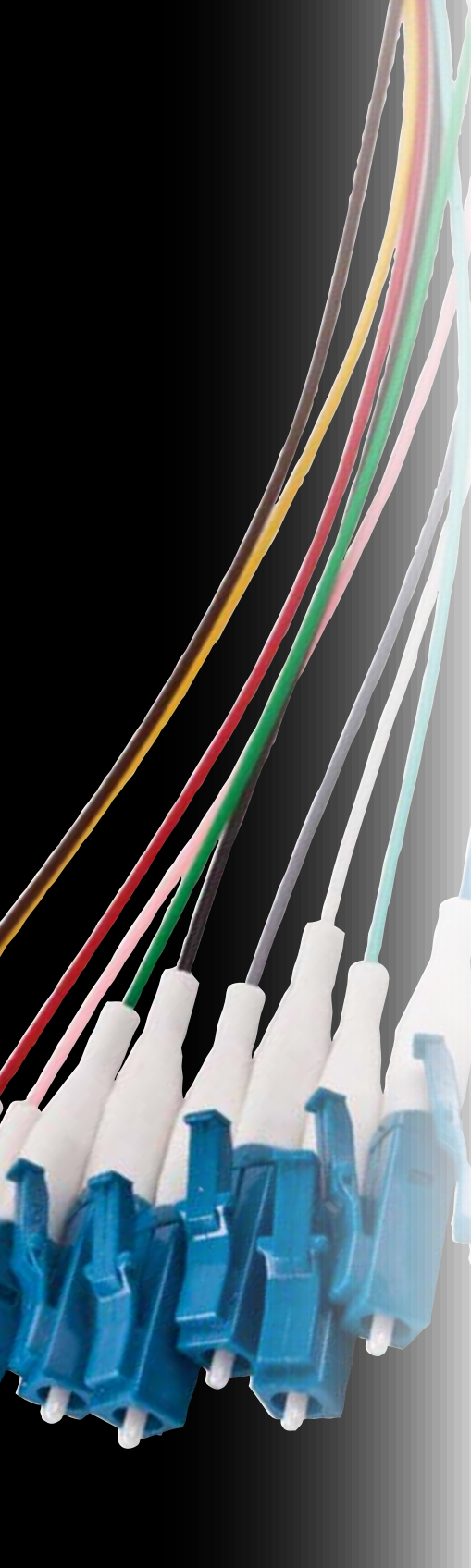
FSP Adapter Panel, Unloaded
FEURFSPD

ACCESSORIES

Description	Catalog No.
Fiber management spool kit, 2-pack	OFSPPOOLPK2
Cable management kit, bend radius clip, 4-pack	FBRMGTCPLK4
Splice tray, 12-fiber, aluminum	STRAY12F
Splice tray, 24-fiber, aluminum	STRAY24F
Splice tray, 24-fiber, molded plastic	OFSPLKT24F



Bend Radius Clip
FBRMGTCPLK4



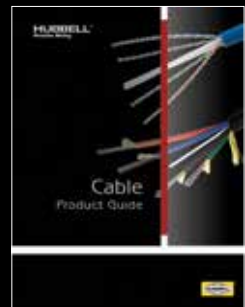
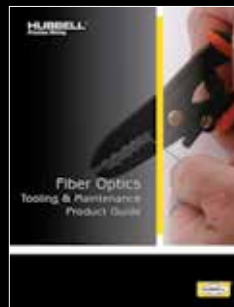
www.hubbell-premise.com



[your complete online resource]

Find what you need quickly with our multi-functional online value-added tools—print, zoom, search and download required information anytime, anywhere.

[related literature]



HUBBELL[®]
Premise Wiring

www.hubbell-premise.com

