



# WALL MOUNTED CABINET

## Product Guide

# WALL MOUNT OVERVIEW: RE-BOX<sup>®</sup> and QUADCAB<sup>®</sup>

## RE-BOX<sup>®</sup>



**RE** RE-BOX<sup>®</sup> commercial cabinets are specifically designed for housing remote network equipment. Each cabinet includes a dedicated area at the top for mounting patch panels and a central area for active equipment. The modular design of this cabinet is very versatile, allowing the installer to configure the cabinet with a wide variety of accessories to mount any type of components.

## Industrial RE-BOX<sup>®</sup>



**IR** Industrial RE-BOX<sup>®</sup> is a NEMA type 4, 12 and 13 enclosure that is designed for harsh environments to protect housed contents from oil, dirt, dust, moisture and outdoor elements. A specially designed mounting plate at the rear of the enclosure allows mounting of standard RE-BOX<sup>®</sup> accessories, brackets and kits.

## Industrial RE-BOX<sup>®</sup> with AC



**IRAC** Industrial RE-BOX<sup>®</sup> Enclosures with Air Conditioning allow deployment of network equipment outside of the data center while maintaining an appropriate temperature operating range. High quality manufacturing and installer friendly configurations ensure that equipment is safe from environmental factors and meet the many challenges of outside plant installations.

## Super Duty QUADCAB®

**HSQ** Super Duty QUADCAB® Enclosures are designed with special high-strength hinges and a removable rear cabinet section to provide fast, easy wall mounting. These wall mount cabinets provide the installer with superior features for quick and easy installation and equipment accessibility. The rear section of the enclosure can be custom configured for a wide variety of equipment mounting brackets and accessories.



## Light Duty QUADCAB®

**HLQ** Light Duty QUADCAB® Enclosures are a great everyday enclosure that comes ready to install on new or retrofit applications. The rear section of the HLQ has cutouts that allow for installation of patch panel or equipment without requiring cables to be disconnected. The center section has installed gaskets that provide additional sealing from dust and debris from entering the cabinet.



## Economy QUADCAB®

**HEQ** Economy QUADCAB® Enclosures are a compact solution for crowded telecommunications rooms and entrance facilities. The reduced size can still house many fiber optic enclosures, networking switches, and patch panels with ease. The rear of the enclosure has large hole so that it can be mounted directly on top of cables that routed through a wall. All QUADCAB® wall mount cabinets provide the installer with superior features for quick and easy installation and equipment accessibility.



# SELECTION: Enclosures to Suit Any Installation

## Important Requirements

**P**roper enclosure selection will ensure lasting use and will simplify future expansion and upgrades. Hubbell Premise Wiring offers a full range of wall mounted enclosures to handle any installation challenge.

Cabinet Series	Equipment Mounting	NEMA	Weight Rating	Rack Units
HSQ Super Duty	Horizontal		400lb	24": 12RU 36": 19RU 48": 26RU
HLQ Light Duty	Horizontal		24": 150lb 36": 250lb 48": 300lb	24": 12RU 36": 19RU 48": 26RU
HEQ Economy	Horizontal		100lb	12": 5RU 18": 8RU 24": 12RU
RE	Vertical		100lb	RE2: 2+2RU RE4: 4+5RU
IR	Horizontal	4,12,13, 4X	250lb	24": 12RU 36": 19RU
	Vertical	4,12,13	100lb	4RU+5RU
IRAC	Horizontal	4,12,13	250lb	24": 12RU 36": 19RU
	Vertical	4,12,13	100lb	4RU+5RU

## Applications

Indoor/Outdoor Rating  
High/Low Capacity  
Large/Small Size  
New/Retrofit Install  
Deep/Shallow Equipment



	Maximum Equipment Depth	Rear Wall Units	Features	Finish	Best Install
	20": 17.5" 26": 23.5" 36": 33.5"	24" 2 36" 4 48" 6	Highest weight loading Three-piece design Fan cooled	Black White	Deep equipment Heavy UPS Retail
	22"		Three-piece design Fan cooled Bonded	Black	Retrofit Telecom rooms Retail
	12"		Large rear cable entry Fan cooled Space savings	Black	Fiber optic splice Small office
	14" 22"	RE2, IDF24: 2 IDF32: 4 R4, IDF42: 6	Floor space saving design Fan cooled Easy to configure	Black Light Gray	Classroom Office space
	20"		Outdoor rated	Gray Stainless	Industrial Minimal equipment
	IR2: 12" IR3: 24" IR4: 36"	IR2: 2 IR3: 4 IR4: 6	Outdoor rated	Gray	Industrial Minimal equipment
	20"		Outdoor rated Air condition cooled	Gray	Outdoor deployment Network switch
	IR2: 12" IR3: 24" IR4: 36"	IR2: 2 IR3: 4 IR4: 6	Outdoor rated Air condition cooled	Gray	Outdoor deployment Network switch



# FEATURES: Back Panel and Clip System

## Back Panel

The back panels of the RE-BOX, IDF, HSQ QUADCAB® and Industrial RE-BOX have many lances that allow for mounting accessories and brackets for mounting equipment. Lances can also be used for attachment points when tying down cables.

Another option for the back panel is our standard sizes of plywood that are pre-cut and painted for mounting brackets and equipment exactly where needed.

## Rear Wall Unit (RWU) Clip System

Attachment slots are stamped along the entire height of the cabinet. The installer can then clip a wide assortment of accessories to the rear wall of the cabinet to mount patch panels, switches, punch-down blocks, coax splitters and so on.

Feature	Accessories	Benefit
Patch panel mounting	REK19 REK19L	<ul style="list-style-type: none"> <li>Mounting patch panels in rear section of QUADCAB® frees space in the center section for more active equipment, resulting in a smaller cabinet profile on the wall or more room for future expansion.</li> <li>Makes cable termination easier.</li> </ul>
Active equipment	REKZ REKZL	<ul style="list-style-type: none"> <li>Deep active equipment can be hung vertically.</li> <li>Blank 19" panels can be used to provide shelves along the rear wall for media converters or other desktop equipment.</li> </ul>
Punch-down blocks	REK110	<ul style="list-style-type: none"> <li>Mounts 110 and 66 blocks into rear using pre-threaded rails; saves labor time on the job.</li> </ul>

- 1 Determine the equipment you need to mount on the rear wall of the cabinet.
- 2 Locate the appropriate accessories on page 7.
- 3 Determine the amount of space needed for each piece and map out on the guide to the right.

\*Each RWU = 6"

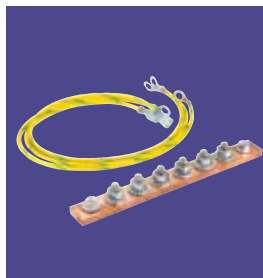
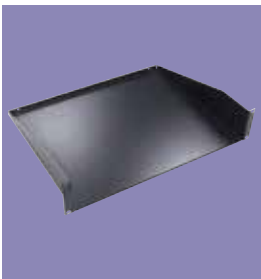


### Rear Wall Units\* (RWU)

- 6 HSQ48xx, IDF42, IR4xx
- 5
- 4 HSQ36xx, IDF32, IR3xx
- 3
- 2 HSQ24xx, ISF24, IR2xx
- 1

# SHARED ACCESSORIES: Selecting Installation Accessories

**H**ubbell Wall Mount Cabinets have many accessories for mounting, cooling, bonding, and powering equipment inside the cabinet. Outside of the cabinet, accessories offered are for integrating, securing and installing the wall mounted cabinet.



Equipment Mounting

Bases

Electrical and Grounding

Climate Control

Security

Fiber Optic

Dampening and Gasketing

Shelving

Doors

Expansion and Mounting

Replacement

# HSQ QUADCAB®



## Specifications

- Load capacity: 400lb
- Width: 22.6"
- (1) pair 19" rack-style rails tapped #12-24 per EIA-310-D
- Finish: Black Powder Coat
- Three independent sections:
  - Rear section mounts to wall
  - Center section hinged to swing out
  - Front door
- Front and rear door lockable







24" height, 12 rack units, Black

Depth	Max Switch Depth	Door	Catalog No.
20"	17.5	Window	<b>HSQ24</b>
		Solid	<b>HSQ24S</b>
26"	23.5	Window	<b>HSQ2426</b>
		Solid	<b>HSQ24S26</b>
36"	33.5	Window	<b>HSQ2436</b>
		Solid	<b>HSQ24S36</b>
24" rails, pair M6			<b>HWK6M6</b>
24" rails, pair #12-24			<b>HWK2412024</b>
20" plywood backer			<b>REKBB20</b>

36" height, 19 rack units, Black

Depth	Max Switch Depth	Front door	Catalog No.
20"	17.5	Window	<b>HSQ36</b>
		Solid	<b>HSQ36S</b>
26"	23.5	Window	<b>HSQ3626</b>
		Solid	<b>HSQ36S26</b>
36"	33.5	Window	<b>HSQ3636</b>
		Solid	<b>HSQ36S36</b>
36" rails, pair M6			<b>HWK9M6</b>
36" rails, pair #12-24			<b>HWK361224</b>
30" plywood backer			<b>REKBB30</b>

48" height, 26 rack units, Black

Depth	Max Switch Depth	Front door	Catalog No.
20"	17.5	Window	<b>HSQ48</b>
		Solid	<b>HSQ48S</b>
26"	23.5	Window	<b>HSQ4826</b>
		Solid	<b>HSQ48S26</b>
36"	33.5	Window	<b>HSQ4836</b>
		Solid	<b>HSQ48S36</b>
48" rails, pair M6			<b>HWK12M6</b>
48" rails, pair #12-24			<b>HWK481224</b>
40" plywood backer			<b>REKBB40</b>

Mounted Accessories

Description	Catalog No.
IDF mounting bracket, 1 RWU	<b>REKHS</b>
Patch panel bracket, 2U	<b>REK19</b>
Patch panel bracket, 4U	<b>REK19L</b>
Equipment bracket, 3U	<b>REKZ</b>
Equipment bracket, 5U	<b>REKZL</b>
Fibre optic bracket	<b>REKFP</b>

Cooling Accessories

Description	Catalog No.
Fan kit and tray, 120V	<b>HWKF120</b>
Fan kit and tray, 230V	<b>HWKF230</b>
Fan kit	<b>REKF</b>
Replacement fan	<b>REKEF</b>
Fan filter kit	<b>HWKFF</b>
Thermostat	<b>CTK</b>

Power and Grounding

Description	Catalog No.
20 Amp power kit	<b>REKP</b>
Grounding busbar kit	<b>REKGB</b>

Security Accessories

Description	Catalog No.
CH751 lock and key	<b>CKL751</b>
333 lock and key	<b>CKL333</b>
716 lock and key	<b>CKL716</b>
CAT 60 lock and key	<b>CKLCAT60</b>

Mobile Bases

Depth	Catalog No.
20"	<b>HSQKMB20</b>
26"	<b>HSQKMB26</b>
36"	<b>HSQKMB36</b>

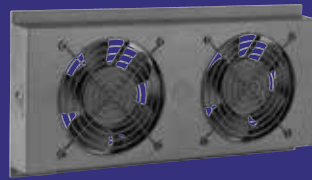
# HLQ QUADCAB®



## Specifications

- Width: 22.6"
- Depth: 24"
- Maximum Switch Depth: 22"
- (2) pair 19" rack-style rails tapped #12-24 per EIA-310-D
- Finish: Black Powder Coat
- Three independent sections
- Front and rear door lockable
- Rear knockouts accommodate terminated cables
- Installed bonding jumpers





24" height, 150lb load capacity, Black			
Height	Rack Units	Front Door	Catalog No.
24"	12	Window	<b>HLQ24</b>
		Mesh	<b>HLQ24M</b>
20" plywood backer			<b>REKBB20</b>

36" height, 250lb load capacity, Black			
Height	Rack Units	Front Door	Catalog No.
36"	19	Window	<b>HLQ36</b>
		Mesh	<b>HLQ36M</b>
30" plywood backer			<b>REKBB30</b>

48" height, 350lb load capacity, Black			
Height	Rack Units	Front Door	Catalog No.
48"	25	Window	<b>HLQ48</b>
		Mesh	<b>HLQ48M</b>
40" plywood backer			<b>REKBB40</b>

Power Accessories	
Description	Catalog No.
20 Amp power kit	<b>REKP</b>
15A horizontal power strip	<b>HPWPWR</b>
20A horizontal power strip	<b>PR10120</b>

Cooling Accessories	
Description	Catalog No.
Fan Kit	<b>HLQFK</b>
Filter kit	<b>HLQFF</b>

Universal Accessories	
Description	Catalog No.
Shelf, 14" deep, cantilevered, solid	<b>MCCCS19</b>
Shelf, 14" cantilevered, perforated	<b>MCCCS19P</b>
Shelf, 11" perforated	<b>HSC11P</b>
1U filler panel	<b>MCCBP175</b>
2U filler panel	<b>MCCBP350</b>
4U filler panel	<b>MCCBP700</b>

Cable Management Accessories	
Description	Catalog No.
1U horizontal cable manager	<b>HS13C</b>
2U horizontal cable manager	<b>HS23C</b>
1U plastic horizontal cable manager	<b>HSD13</b>
2U plastic horizontal cable manager	<b>HSD23</b>

Cable Fasteners	
Description	Catalog No.
8" Black VELCRO® brand strap, 10-pack	<b>HPWCVFBK8</b>
8" Yellow VELCRO® brand strap, 10-pack	<b>HPWCVFYL8</b>
8" Red VELCRO® brand strap, 10-pack	<b>HPWCVFRD8</b>

Bonding Accessories	
Description	Catalog No.
Conductor kit, 12'	<b>HGRKTD144D</b>
Grounding busbar kit	<b>REKGB</b>
Rack mounted busbar	<b>HBBBHR19KT</b>
9" flex bonding jumper	<b>HGBHF9</b>

VELCRO brand hook-and-loop fasteners are a registered trademark of Velcro BVBA.

# HEQ QUADCAB®



## Specifications

- Width: 22.6"
- Depth: 14"
- Maximum Switch Depth: 12"
- Load capacity: 100lb
- (1) pair 19" rack-style rails tapped #12-24 per EIA-310-D
- Finish: Powder Coat Black
- Reversible and locked door





12" height, 100lb load capacity, Black

Height	Rack Units	Front Door	Catalog No.
12"	5	Mesh	<b>HEQ12</b>
		Solid	<b>HEQ12S</b>

18" height, 100lb load capacity, Black

Height	Rack Units	Front Door	Catalog No.
18"	8	Mesh	<b>HEQ18</b>
		Solid	<b>HEQ18S</b>

24" height, 100lb load capacity, Black

Height	Rack Units	Front Door	Catalog No.
24"	12	Mesh	<b>HEQ24</b>
		Solid	<b>HEQ24S</b>

#### Bonding Accessories

Description	Catalog No.
Conductor kit, 12'	<b>HGRKTD144D</b>
Grounding busbar kit	<b>REKGB</b>
Rack mounted busbar	<b>HBBBHR19KT</b>
9" flex bonding jumper	<b>HGBHF9</b>

#### Power Accessories

Description	Catalog No.
20 Amp power kit	<b>REKP</b>
15A horizontal power strip	<b>HPWPWR</b>
20A horizontal power strip	<b>PR10120</b>

#### Cooling Accessories

Description	Catalog No.
Fan kit	<b>REKF</b>
Replacement fan	<b>REKEF</b>
Fan filter kit	<b>HWKFF</b>
Thermostat	<b>CTK</b>

#### Universal Accessories

Description	Catalog No.
Shelf, 11" perforated	<b>HSC11P</b>
1U filler panel	<b>MCCBP175</b>
2U filler panel	<b>MCCBP350</b>
4U filler panel	<b>MCCBP700</b>

#### Cable Management Accessories

Description	Catalog No.
1U horizontal cable manager, no cover	<b>HS13</b>
1U horizontal cable manager,	<b>HS13C</b>
2U horizontal cable manager, no cover	<b>HS23</b>
2U horizontal cable manager,	<b>HS23C</b>
1U plastic horizontal cable manager	<b>HSD13</b>
2U plastic horizontal cable manager	<b>HSD23</b>

#### Cable Fasteners

Description	Catalog No.
8" Black VELCRO® brand strap, 10-pack	<b>HPWCVBK8</b>
8" Yellow VELCRO® brand strap, 10-pack	<b>HPWCVFYL8</b>
8" Red VELCRO® brand strap, 10-pack	<b>HPWCVFRD8</b>

VELCRO brand hook-and-loop fasteners are a registered trademark of Velcro BVBA.

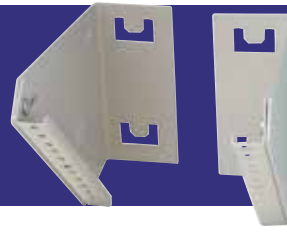
# RE-BOX<sup>®</sup> and IDF



## Specifications

- Load capacity: 100lb
- Designed to meet NEMA 2
- 16 gauge cold rolled steel
- Width: 24.2"
- UL 1863
- Tamper-resistant per GR-47-CORE





Pre-configured, 32" height, 2U patch panel bracket, 2U equipment bracket

Height	Depth	Max Switch Depth	Color	Catalog No.
32"	7"	14"	Black	<b>RE2B</b>
			Gray	<b>RE2</b>

Pre-configured, 32" height, 4U patch panel bracket, 5U equipment bracket

Height	Depth	Max Switch Depth	Color	Catalog No.
32"	10"	14"	Black	<b>RE4B</b>
			Gray	<b>RE4</b>

Pre-configured, 42" height, 4U patch panel bracket, 5U equipment bracket

Height	Depth	Max Switch Depth	Color	Catalog No.
42"	10"	22"	Black	<b>RE4XB</b>
			Gray	<b>RE4X</b>

User-configured, 24.2" width, Gray

Height	Wall Units	Depth	Max Switch Depth	Catalog No.
24"	2	10"	14	<b>IDF24</b>
32"	4	10"	22	<b>IDF32</b>
42"	6	10"	32	<b>IDF42</b>

Bonding Accessories

Description	Catalog No.
Conductor kit, 12'	<b>HGRKTD144D</b>
Grounding busbar kit	<b>REKGB</b>
Rack mounted busbar	<b>HBBBHR19KT</b>
9" flex bonding jumper	<b>HGBHF9</b>

Mounted Accessories

Description	Catalog No.
IDF mounting bracket, 1 RWU	<b>REKHS</b>
Patch panel bracket, 2U	<b>REK19</b>
Patch panel bracket, 4U	<b>REK19L</b>
Equipment bracket, 3U	<b>REKZ</b>
Equipment bracket, 5U	<b>REKZL</b>
110/66 block rails	<b>REK110</b>
Fiber optic bracket	<b>REKFP</b>
Panel bracket for FSP	<b>NSOFSB</b>

Installation Accessories

Description	Catalog No.
24" trim ring	<b>REKR24</b>
32" trim ring	<b>REKR32</b>
42" trim ring	<b>REKR42</b>
20" plywood backer	<b>REKBB20</b>
30" plywood backer	<b>REKBB30</b>
40" plywood backer	<b>REKBB40</b>
Sound dampening kit	<b>REKS</b>
Gasket kit, 10'	<b>REKG</b>
Conversion kit, black	<b>REKUB</b>
Conversion kit, gray	<b>REKU</b>
Left hand hinge kit	<b>REKI</b>
Padlock hasp kit	<b>REKH</b>

Cooling Accessories

Description	Catalog No.
Fan kit	<b>REKF</b>
Replacement fan	<b>REKEF</b>
Fan filter kit	<b>HWKFF</b>
Thermostat	<b>CTK</b>

Power Accessories

Description	Catalog No.
20 Amp power kit	<b>REKP</b>
15A horizontal power strip	<b>HPWPWR</b>
20A horizontal power strip	<b>PR10120</b>

# Industrial RE-BOX<sup>®</sup>

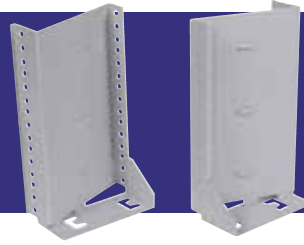


## Specifications

- NEMA 4/12/13, 4X
- Width: 24"
- Three-point secured door
- 14 gauge steel
- UL and CSA Listed
- ANSI Gray Polyester Power Coat
- Poured-in-place polyurethane gasket







Pre-configured, 100lb load capacity, 4RU patch panel bracket, rear lance panel, 5RU vertical equipment mount bracket, Gray Powder Coat, #12-24 threaded brackets

Height	Depth	Max Switch Depth	Catalog No.
24"	12"	4	<b>IR221PG</b>
36"	12"	16	<b>IR321PG</b>
48"	12"	28	<b>IR421PG</b>

User-configured, rear perforated panel, Gray Powder Coat

Height	Depth	RWU	Catalog No.
24"	12"	2	<b>IR221UG</b>
36"	12"	4	<b>IR321UG</b>
48"	12"	6	<b>IR421UG</b>

Pre-configured, 100lb load capacity, 4RU patch panel bracket, rear lance panel, 5RU vertical equipment mount bracket, 304 Stainless Steel, #12-24 threaded

Height	Depth	Max Switch Depth	Catalog No.
24"	12"	4	<b>IR221PS</b>
36"	12"	16	<b>IR321PS</b>
48"	12"	28	<b>IR421PS</b>

Pre-configured, 250lb load capacity, rear perforated panel, (3) doors for rear equipment access, slide-out mounting horizontal rails, cabinet mount bracket, maximum switch depth is 20, #12-24 threaded brackets

Height	Rack Units	NEMA	Color	Catalog No.
36"	19	4/12/13	Gray	<b>IR323PG</b>
		4X	Stainless	<b>IR323PS</b>
48"	26	4/12/13	Gray	<b>IR423PG</b>
		4X	Stainless	<b>IR423PS</b>

Pre-configured, 24"wide, 250lb load capacity, NEMA 4/12/13, Gray, rear perforated panel, horizontal equipment

Height	Rack Units	Depth	Max Switch Depth	Catalog No.
24"	12	24"	20	<b>IR222PG</b>
36"	19	24"	20	<b>IR322PG</b>
48"	26	24"	20	<b>IR422PG</b>

#### Mounted Accessories

Description	Catalog No.
IDF mounting bracket, 1 RWU	<b>REKHS</b>
Patch panel bracket, 2U	<b>REK19</b>
Patch panel bracket, 4U	<b>REK19L</b>
Equipment bracket, 3U	<b>REKZ</b>
Equipment bracket, 5U	<b>REKZL</b>
110/66 block rails	<b>REK110</b>
Fiber optic bracket	<b>REKFP</b>
Panel bracket for FSP	<b>NSOFSB</b>

#### Installation Accessories

Description	Catalog No.
20" plywood backer	<b>REKBB20</b>
30" plywood backer	<b>REKBB30</b>
40" plywood backer	<b>REKBB40</b>
Foot kit, 18" H, 12" D	<b>IRF1812</b>
Foot kit, 12" H, 24" D	<b>IRF1224</b>

#### Bonding Accessories

Description	Catalog No.
Conductor kit, 12'	<b>HGRKTD144D</b>
Grounding busbar kit	<b>REKGB</b>
Rack mounted busbar	<b>HBBBHR19KT</b>
9" flex bonding jumper	<b>HGBHF9</b>

#### Power Accessories

Description	Catalog No.
20 Amp power kit	<b>REKP</b>
15A horizontal power strip	<b>HPWPWR</b>
20A horizontal power strip	<b>PR10120</b>

#### Heating Accessories

Description	Catalog No.
Heater thermostat	<b>CTKH</b>
250 watt heater with fan, 120V	<b>IRH250</b>
400 watt heater with fan, 120V	<b>IRH400</b>

# Industrial RE-BOX<sup>®</sup> with AC



## Specifications

- NEMA 4/12/13, 4X
- Width: 24"
- Three-point secured door
- Configured for air conditioning
- UL Listed
- Poured-in-place polyurethane gasket





Pre-configured, 24" wide, 100lb load capacity, 5RU vertical equipment mounting bracket, 4RU patch panel bracket, RE-BOX® rear panel, 1000BTU AC required

Height	Depth	Max Switch Depth	Catalog No.
24"	12"	4	<b>IR221APG</b>
36"	12"	16	<b>IR321APG</b>
48"	12"	28	<b>IR421APG</b>
Foot kit, 18" H, 12" D			<b>IRF1812</b>
1000BTU air conditioner			<b>IRAC1</b>

Pre-configured, 24" wide, 100lb load capacity, 5RU vertical equipment mounting bracket, 4RU patch panel bracket, RE-BOX® rear panel, 3000BTU AC required

Height	Depth	Max Switch Depth	Catalog No.
36"	16"	16	<b>IR3216APG</b>
48"	16"	28	<b>IR4216APG</b>
3000BTU air conditioner			<b>IRAC3</b>

Pre-configured, 14" wide, 100lb load capacity, 2RU hinged patch panel bracket, plywood backer, 2000BTU AC required

Height	Depth	Max Switch Depth	Catalog No.
24"	16"	10	<b>IR211AFK</b>
2000BTU air conditioner			<b>IRAC2</b>

Pre-configured, 24" wide, 250lb load capacity, 3000BTU AC required

Height	Rack Units	Depth	Max Switch Depth	Catalog No.
24"	12	24"	20	<b>IR222APG</b>
36"	19	24"	20	<b>IR322APG</b>
Foot kit, 12" H, 24" D			<b>IRF1224</b>	
3000BTU air conditioner			<b>IRAC3</b>	

#### Mounted Accessories

Description	Catalog No.
IDF mounting bracket, 1 RWU	<b>REKHS</b>
Patch panel bracket, 2U	<b>REK19</b>
Patch panel bracket, 4U	<b>REK19L</b>
Equipment bracket, 3U	<b>REKZ</b>
Equipment bracket, 5U	<b>REKZL</b>
110/66 block rails	<b>REK110</b>
Fiber optic bracket	<b>REKFP</b>
Panel bracket for FSP	<b>NSOFBS</b>

#### Installation Accessories

Description	Catalog No.
20" plywood backer	<b>REKBB20</b>
30" plywood backer	<b>REKBB30</b>
40" plywood backer	<b>REKBB40</b>

#### Bonding Accessories

Description	Catalog No.
Conductor kit, 12'	<b>HGRKTD144D</b>
Grounding busbar kit	<b>REKGB</b>
Rack mounted busbar	<b>HBBBHR19KT</b>
9" flex bonding jumper	<b>HGBHF9</b>

#### Cable Fasteners

Description	Catalog No.
8" Black VELCRO® brand strap, 10-pack	<b>HPWCVFBK8</b>
8" Yellow VELCRO® brand strap, 10-pack	<b>HPWCV FYL8</b>
8" Red VELCRO® brand strap, 10-pack	<b>HPWCVFRD8</b>

#### Power Accessories

Description	Catalog No.
20 Amp power kit	<b>REKP</b>
15A horizontal power strip	<b>HPWPWR</b>
20A horizontal power strip	<b>PR10120</b>

VELCRO brand hook-and-loop fasteners are a registered trademark of Velcro BVBA.

www.hubbell-premise.com



### Your complete online resource

Find what you need quickly with our multi-functional online value-added tools—print, zoom, search and download required information anytime, anywhere.

### Related literature



**HUBBELL**<sup>®</sup>  
Premise Wiring

hubbell-premise.com

