

## Meets TIA and ISO Category 6 Performance Requirements

Hubbell's NEXTSPEED® Link 6 cable meets all transmission and mechanical performance requirements specified in the TIA/EIA-568.2-D and ISO/IEC 11801 (2nd Edition) standards.

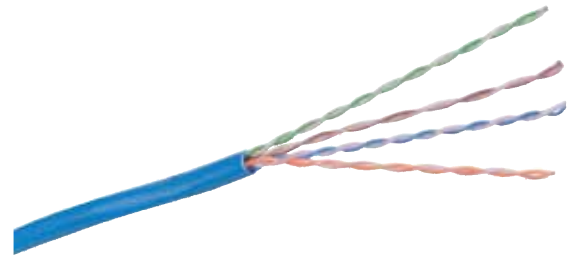
Configure Hubbell Premise Wiring's high performance connectivity (jacks, panel, cords, blocks) with NEXTSPEED Link 6 cable for an economical cabling solution that provides optimized electrical performance capable of handling today's critical 1GbE applications. Eligible projects are backed by the 25 Year Mission Critical Warranty.

### FEATURES

- Sweep Tested from 1-500 MHz
- Cable balanced and optimized with Hubbell connectivity to maximize performance
- Updated jacket construction and re-designed box for improved pulling
- Small O.D. to maximize conduit/pathway capacity and airflow

### SPECIFICATIONS

- Conductor: 23 AWG solid annealed copper
- Insulation: CMP: FEP; CMR: Polyolefin
- Pairing
  - 1: Blue + White
  - 2: Orange + White
  - 3: Green + White
  - 4: Brown + White
- Cabling: 4 unshielded twisted pairs cabled in an overall jacket
- Jacket: CMP: Low-Smoke PVC; CMR: PVC
- NVP: CMP: 73%; CMR: 70%
- Rated Temperature: CMP 90°C; CMR 75°C



Nominal Cable O.D.  
CMP: 0.19"  
CMR: 0.20"

Cable Weight (lb/1000')  
CMP: 23  
CMR: 22

### STANDARDS

- UL 444
- ANSI/TIA 568.2-D
- ISO 11802 Ed. 2 (Class E)
- NFPA 262 (CMP); UL 1666 (CMR)
- NEC Article 800 compliant (NFPA 70)
- RoHS/RoHS 2 compliant

### APPLICATIONS

- IEEE 802.3 10/100/1000BASE-T
- IEEE 802.3 10GbE when qualified per TSB-155
- IEEE 802.3af (PoE), IEEE 802.3at (PoE+), IEEE 802.3bt (4PPoE Type 3 and 4)



# NEXTSPEED® Link 6 Cable

**HUBBELL®**  
Premise Wiring

## NEXTSPEED® Category 6 LINK UTP Cable

Color	PLENUM 1,000' REELEX® Box	RISER 1,000' REELEX® Box
Black	HC6RPEBK	HC6RREBK
Blue	HC6RPEB	HC6RREB
Gray	HC6RPEGY	HC6RREGY
Green	HC6RPEGN	HC6RREGN
Orange	HC6RPEOR	HC6RREOR
Pink	HC6RPEPK	HC6RREPK
Purple	HC6RPEP	HC6RREP
Red	HC6RPER	HC6RRER
White	HC6RPEW	HC6RREW
Yellow	HC6RPEY	HC6RREY

\*REELEX is licensed and patented by Windings Inc.

250ft, 500ft, and 2,500ft put ups available. Contact Inside Sales for ordering information.



## NEXTSPEED® Category 6 Components

### Jacks

Catalog No.

**HXJ6xx**

xx = Color:

**BK** (Black), **B** (Blue),  
**GY** (Gray), **GN** (Green),  
**OW** (Office White),  
**OR** (Orange), **R** (Red),  
**W** (White)



### Patch Panels

Description

Catalog No.

Standard, Black

**HP6pp\***

Angled, Black

**HP6ppA**

\*Add **W** to end of Catalog Number for White (Standard only)

**pp** = Ports

**24** = 24-port, 1.75"H

**48** = 48-port, 3.50"H



### Patch Cords

Catalog No.

**HC6xxyy**

xx = Color: **BK** (Black), **B** (Blue), **GY** (Gray),  
**GN** (Green), **OR** (Orange), **P** (Purple) **R** (Red),  
**W** (White), **Y** (Yellow)

yy = Standard Length:

**01** (1'), **03** (3'), **05** (5'),

**07** (7'), **10** (10'), **15**

(15'), **20** (20'), **25** (25')



## TRANSMISSION SPECIFICATIONS, Worst Case

TIA/EIA-568.2-D Category 6 Compliant; ISO/IEC 11801, 2nd ed. Category 6 Compliant

Frequency (MHz)	Insertion Loss (dB/100m)	NEXT (dB/100m)	PSNEXT (dB/100m)	ACR (dB)	PSACR (dB)	ACRF (ELFEXT) (dB)	PSACRF (PSELFEXT) (dB)	Return Loss (dB)
1	2.2	74.4	72.5	72.2	70.4	67.9	64.9	20.2
4	3.9	65.5	63.4	61.7	59.7	52.7	52.9	23.2
8	5.4	60.8	58.7	55.4	53.2	46.8	46.8	24.6
10	6.2	59.5	57.5	53.4	51.5	44.9	44.9	25.2
16	7.7	56.3	54.4	48.7	46.7	40.5	40.6	25.1
31.25	10.8	51.7	50.0	41.3	39.3	34.8	34.8	23.7
62.5	15.6	47.5	45.5	32.2	30.2	28.9	28.8	21.6
100	19.7	44.5	42.4	24.4	22.6	24.9	24.9	20.2
200	29.2	39.9	37.8	10.7	8.9	21.9	18.8	18.1
250	32.7	38.5	36.4	5.7	3.6	19.9	16.9	17.4
300*	36.5	37.0	35.3	-	-	15.2	15.4	16.9
350*	39.6	36.2	34.2	-	-	13.8	13.8	16.4
400*	43.1	36.5	33.5	-	-	12.9	12.9	15.8
500*	48.8	33.9	31.7	-	-	10.9	10.9	15.1

\*Frequencies beyond the TIA and ISO requirements are for information only.

**HUBBELL®**  
Premise Wiring

[hubbell.com/hubbellpremisewiring/en](http://hubbell.com/hubbellpremisewiring/en)

